



Post Office Box 97  
 Benton Harbor, Michigan  
 Ph: 269/926-6171  
 Fax: 269/925-8288

PART NUMBER: STD267  
 REVISION: E

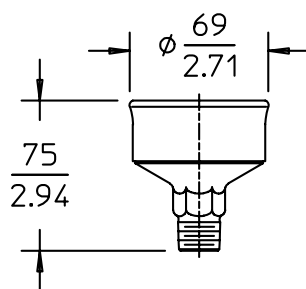
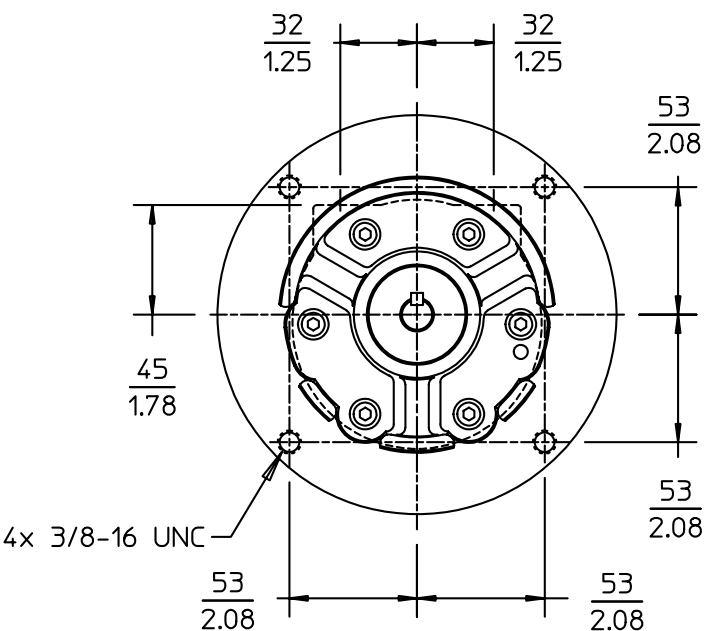
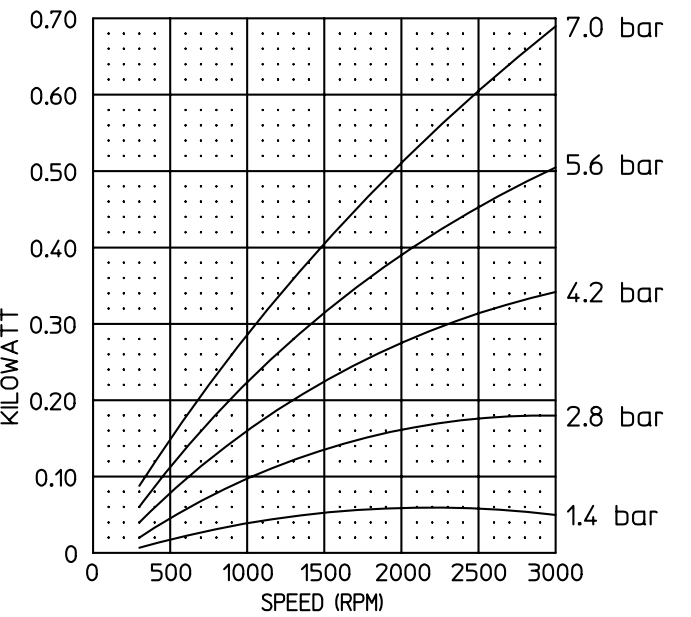
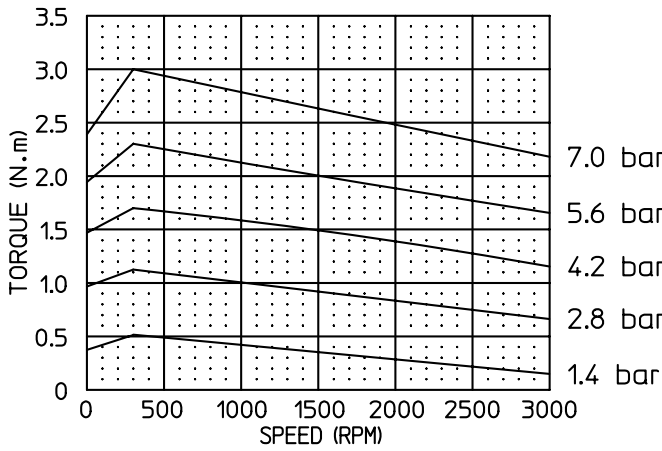
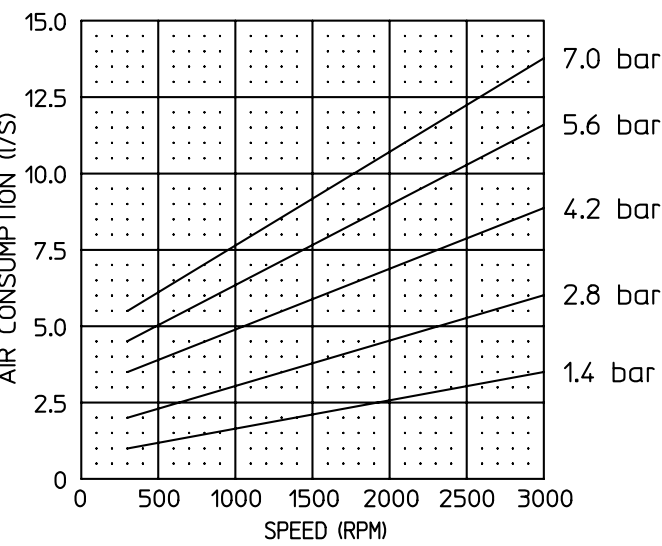
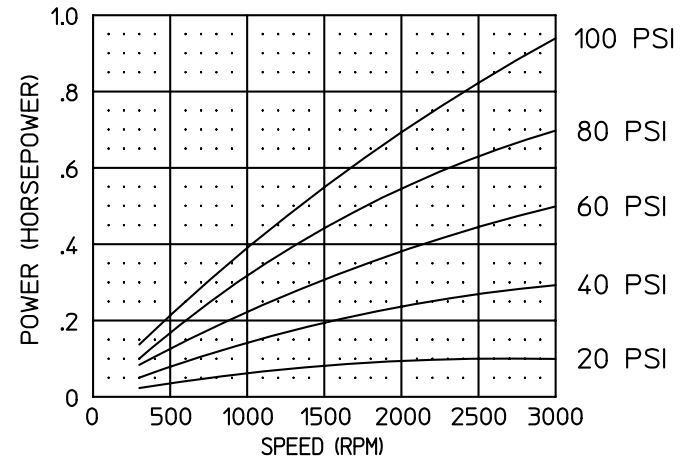
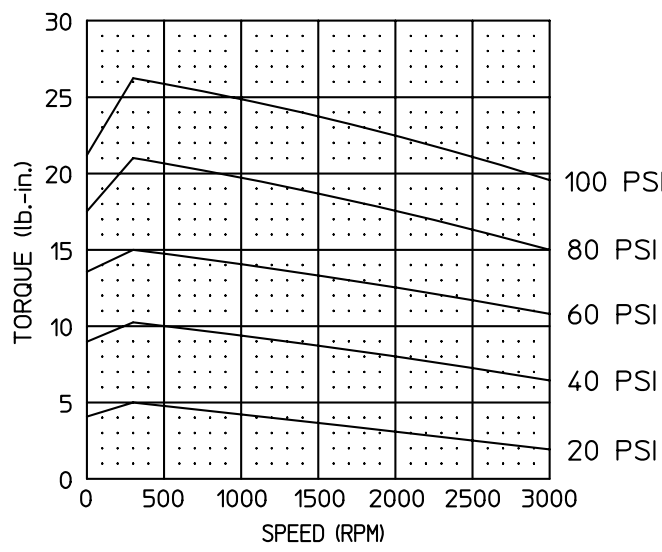
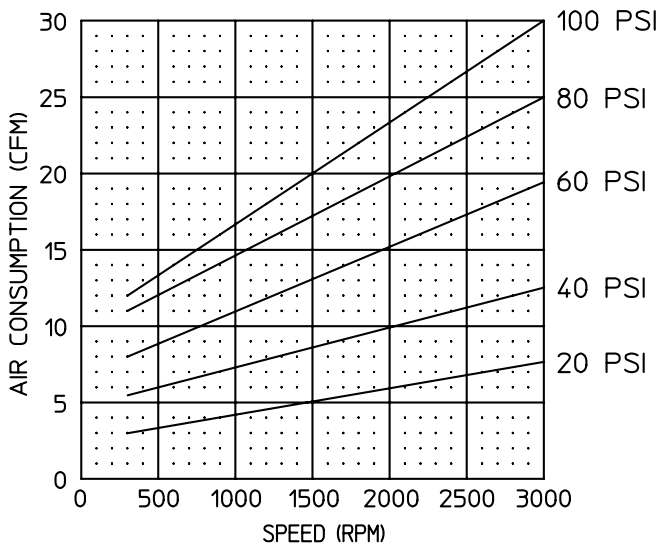
# Product Specifications

Model Number	MAX. PRESS.		MAX. SPEED	HP	kW	Net Wt.	
	bar.	PSI				lbs.	kg
2AM-NRV-90	7.0	100	3,000 RPM	.95	0.70	4.2	1.9
2AM-NRV-90A	7.0	100	3,000 RPM	.95	0.70	4.2	1.9

SOUND LEVEL 76 dB(A) MAX.  
 NORMAL AMBIENT +1° C. - 120° C.  
 RELATIVE HUMIDITY 0% - 100%  
 ENVIRONMENT HAZARDOUS AMBIENT COMBUSTIBLE  
GAS & DUST +1°C TO +40°C

\* TECHNICAL DATA SUBJECT TO CHANGE WITHOUT NOTICE.  
 \* ALL DIMENSIONS ARE REFERENCE ONLY UNLESS TOLERANCED.

CONFORMS TO EUROPEAN STANDARD EN13463-1 NON-ELECTRICAL EQUIPMENT FOR EXPLOSIVE ATMOSPHERES GROUP II CAT 2 (GAS & DUST), PROTECTED BY CONSTRUCTION (SURFACE TEMP RATED 135C)



MUFFLER ASSEMBLY SHIPPED UNATTACHED

